

# CNC ROTARY TABLE

# DR

## CNC ROTARY TABLE

- ◆ High accuracy and worm wheel provides long term duration.
- ◆ High rigidity and allows heavy loads.
- ◆ Multi-point brake system allows heavy cutting.
- ◆ Can be operated with M/C for 4 axes.



Model No. : DR-250 B



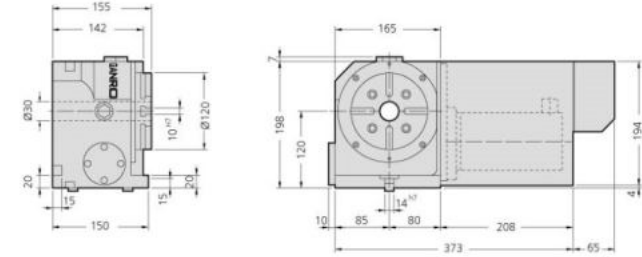
CNC ROTARY/  
INDEX TABLE

Item/Model No.		DR-120R	DR-170R	DR-250R	DR-320R
Diameter of Table	mm	φ 120/4.72	φ 170/6.69	φ 250/9.84	φ 320/12.60
	inch	φ 150/5.90	φ 200/7.87		
Diameter of Thru-hole	mm	φ 30/1.18	φ 35/1.38	φ 70/2.76	φ 110/4.33
Center Height in Vertical	mm	120/4.72	135/5.31	185/7.28	210/8.27
Overall Height in Vertical	mm	205/8.07	295/11.61	322/12.68	387/15.24
Overall Height in Horizontal	mm	155/6.10	165/6.50	200/7.87	240/9.45
Width of T Slot	mm	10 <sup>H7</sup>	12 <sup>H7</sup>	12 <sup>H7</sup>	14 <sup>H7</sup>
Width of Guide Block	mm	14 <sup>H7</sup>	18 <sup>H7</sup>	18 <sup>H7</sup>	18 <sup>H7</sup>
Servo Motor Type	FANUC	α 2i	α 4i	α 8i	α 12i
	MITSUBISHI	HF-75	HF-103	HF-153	HF-203
	SIEMENS	1FK7042	1FK7060	1FK7063	1FK7083
	HEIDENHAIN	QSY96A	QSY116C	QSY116J	QSY155B
Total Reduction Ratio		1:60	1:90	1:90	1:90
MIN. Increment	deg	0.001°	0.001°	0.001°	0.001°
MAX. Rotation Speed(Motor 2000 RPM)	RPM	33.3	22.2	22.2	22.2
Clamping Torque	(Pneumatic system:5kg/cm <sup>2</sup> )	12	25	47	71
	(Hydraulic system:20kg/cm <sup>2</sup> )		50	94	142
Indexing Accuracy	sec.	60°	25°	15°	15°
Repeatability	Unidirectional	8"	8"	4"	4"
	Bidirectional	16"	16"	8"	8"
Accuracy		16"	16"	8"	8"
N.W.	kg	28	75	124	210
MAX. Work Load	Vertical	kg	35	100	125
	Horizontal	kg	75	200	300
MAX. Thrust Load	F	kgf	600	822	1208
	FxL	kgf · m	6	13	18
Driving Torque	FxL	kgf · m	12	50	72
		kgf · m	12	23	45

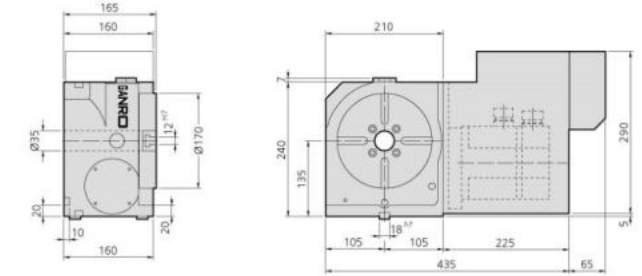
◆ GANRO has right to revise the above specifications. We also can revise the specifications for customers' special requirement.

- ◆ 1. Up, backside and left cable outlet is available
- ◆ 2. Standard accessories: eye bolts, fixture blocks
- ◆ 3. Suitable tailstocks refer to p.52
- ◆ 4. Suitable controllers refer to p.56

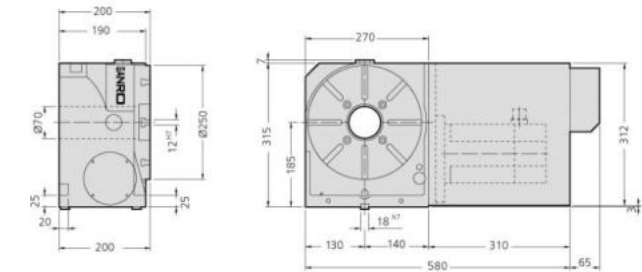
### DR-120R



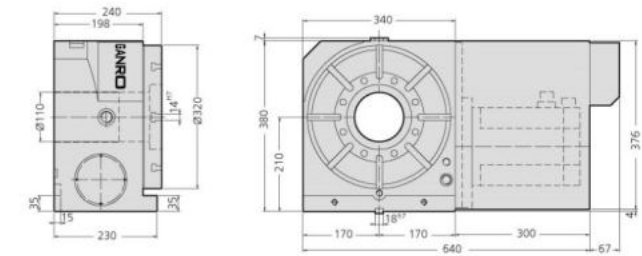
### DR-170R



### DR-250R



### DR-320R



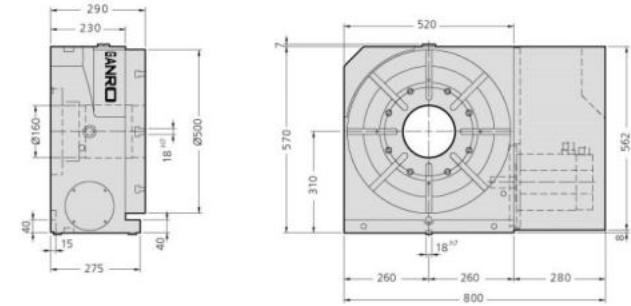
★ The size of motor metal sheet will change in accordance with real use of brand and model.

Item/Model No.		DR-400R	DR-500R	DR-630R	DR-800R	DR-1000R	
Diameter of Table	mm/inch	φ 400/15.75	φ 500/19.69	φ 630/24.80	φ 800/31.50	φ 1000/39.37	
Diameter of Thru-hole	mm/inch	φ 130/5.12	φ 160/6.30	φ 230/9.06	φ 300/11.81	φ 400/15.75	
Center Height in Vertical	mm/inch	250/9.84	310/12.20	400/15.75	480/18.90	600/23.62	
Overall Height in Vertical	mm/inch	467/18.39	577/22.72	732/28.82	887/34.92	1100/43.31	
Overall Height in Horizontal	mm/inch	250/9.84	290/11.42	320/12.60	340/13.39	400/15.75	
Width of T Slot	mm	14 <sup>H7</sup>	18 <sup>H7</sup>	18 <sup>H7</sup>	20 <sup>H7</sup>	22 <sup>H7</sup>	
Width of Guide Block	mm	18 <sup>H7</sup>	18 <sup>H7</sup>	18 <sup>H7</sup>	22 <sup>H7</sup>	22 <sup>H7</sup>	
Servo Motor Type	FANUC	α 12i	α 22i	α 22i	α 22i	α 30i	
	MITSUBISHI	HF-203	HF-353	HF-353	HF-353	HF-453	
	SIEMENS	1FK7083	1FK7101	1FK7101	1FK7101	1FK7103	
	HEIDENHAIN	QSY155B	QSY155D	QSY155D	QSY155D	QSY190C	
Total Reduction Ratio		1:90	1:180	1:180	1:180	1:360	
MIN. increment	deg.	0.001°	0.001°	0.001°	0.001°	0.001°	
MAX. Rotation Speed(Motor 2000 RPM)	RPM	22.2	11.11	11.11	11.11	5.4	
Clamping Torque	(Pneumatic system:6kg/cm <sup>2</sup> )	92	125	350	370		
	(Hydraulic system:20kg/cm <sup>2</sup> )	184	250	700	740	10000 (Hydraulic:35kg/cm <sup>2</sup> )	
Indexing Accuracy	sec.	15°	15°	15°	15°		
Repeatability Accuracy	Unidirectional	4"	4"	4"	4"	refer to P.55	
	Bidirectional	8"	8"	8"	8"		
N.W.	kg	330	480	830	1150	2600	
MAX. Work Load	Vertical	kg	300	350	400	550	1500
	Horizontal	kg	500	600	800	1050	3500
MAX. Thrust Load	F	kgf	1585	1880	2080	2320	2800
	FxL	kgf · m	36	89	185	220	300
	FyL	kgf · m	122	165	228	275	380
	Driving Torque	kgf · m	160	230	330	380	400

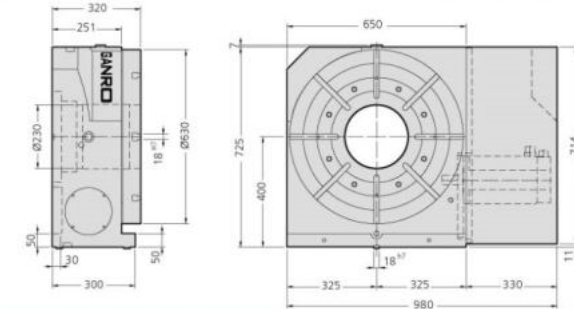
◆ GANRO has right to revise the above specifications. We also can revise the specifications for customers' special requirement.

- ◆ 1. Up, backside and left cable outlet is available 2. Standard accessories: eye bolts, fixture blocks 3. Suitable tailstocks refer to p.52  
4. Suitable controllers refer to p.56

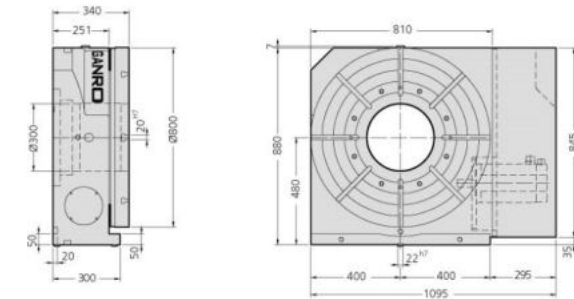
### DR-500R



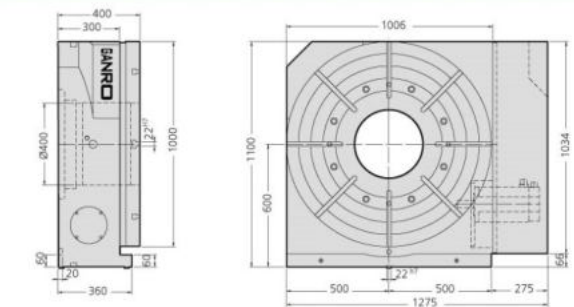
### DR-630R



### DR-800R

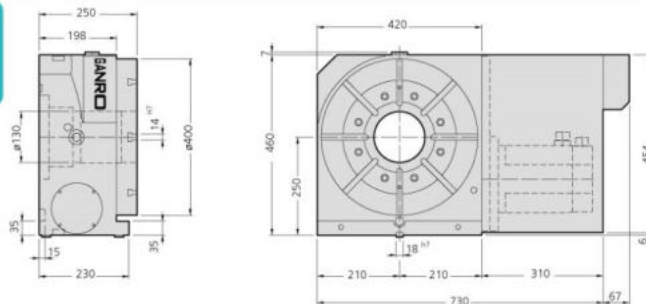


### DR-1000R



★ The size of motor metal sheet will change in accordance with real use of brand and model.

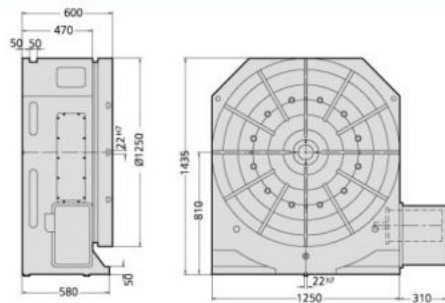
### DR-400R



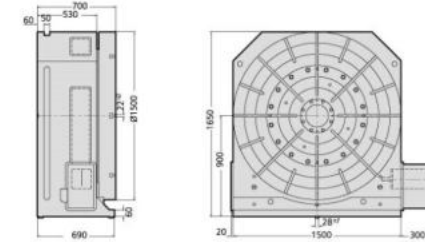
Item/Model No.		DR-1250	DR-1500	DR-2000	DR-2500	DR-170B	DR-250B
Diameter of Table	mm/inch	φ 1250/49.21	φ 1500/59.06	φ 2000/78.74	φ 2500/98.43	φ 170/6.69 φ 200/7.87	φ 250/9.84
Diameter of Thru-hole	mm/inch					φ 35/1.38	φ 70/2.76
Center Height in Vertical	mm/inch	810/31.89	900/35.43	1100/43.31	1375/54.13	135/5.31	185/7.28
Overall Height in Vertical	mm/inch	1435/56.50	1650/64.96	2100/82.68	2625/103.35	310/12.20	322/12.68
Overall Height in Horizontal	mm/inch	600/23.62	700/27.56	720/28.35	900/35.43		
Width of T Slot	mm	22 <sup>H7</sup>	22 <sup>H7</sup>	28 <sup>H7</sup>	28 <sup>H7</sup>	12 <sup>H7</sup>	12 <sup>H7</sup>
Width of Guide Block	mm	22 <sup>H7</sup>	28 <sup>H7</sup>	36 <sup>H7</sup>	36 <sup>H7</sup>	18 <sup>H7</sup>	18 <sup>H7</sup>
Servo Motor Type	FANUC	α 30i	α 30i	α 40i	α 40i	α 4i	α 8i
	MITSUBISHI	HF-453	HF-453	HF-703	HF-703	HF-103	HF-153
	SIEMENS	1FK7103	1FK7103	1FK7105	1FK7105	1FK7060	1FK7063
	HEIDENHAIN	QSY190C	QSY190C	QSY190F	QSY190F	QSY116C	QSY116I
Total Reduction Ratio		1:720	1:720	1:720	1:720	1:90	1:90
MIN. Increment	deg	0.001°	0.001°	0.001°	0.001°	0.001°	0.001°
MAX. Rotation Speed(Motor 2000 RPM)	RPM	2.7	2.7	2.7	2.7	22.2	22.2
Clamping Torque	(Pneumatic system:6kg/cm <sup>2</sup> )					25	47
	(Hydraulic system:20kg/cm <sup>2</sup> )	12000 (Hydraulic:35kg/cm <sup>2</sup> )	15000 (Hydraulic:35kg/cm <sup>2</sup> )	20000 (Hydraulic:35kg/cm <sup>2</sup> )	25000 (Hydraulic:35kg/cm <sup>2</sup> )	50	94
Indexing Accuracy	sec					25°	15°
Repeatability Accuracy	Unidirectional	refer to P.55	refer to P.55	refer to P.55	refer to P.55	8°	4°
	Bidirectional					16°	8°
N.W.	kg	4000	6500	8000	11500	75	124
MAX. Work Load	Vertical	2000	3000	4000	5000	100	125
	Horizontal	5000	8000	10000	15000		
MAX. Thrust Load	F	5000	10000	15000	20000	822	1208
	F <sub>AL</sub>	420	520	700	900	13	18
	F <sub>TL</sub>	580	680	820	1025	50	72
	Driving Torque	kgf · m	500	580	700	875	23

- ◆ GANRO has right to revise the above specifications. We also can revise the specifications for customers' special requirement.  
 ◆ 1. Up, backside and left cable outlet is available 2. Standard accessories: eye bolts, fixture blocks 3. Suitable tailstocks refer to p.52  
 4. Suitable controllers refer to p.56

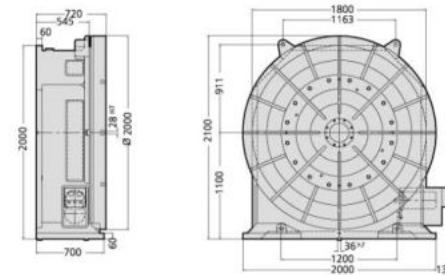
### DR-1250



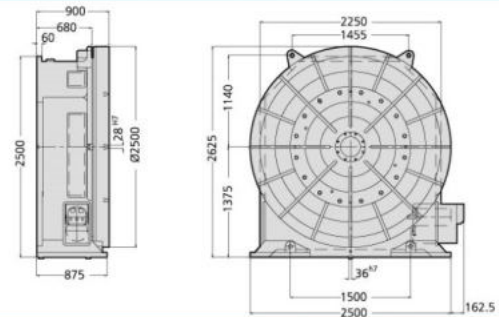
### DR-1500



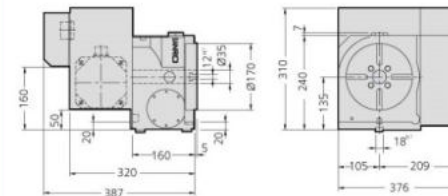
### DR-2000



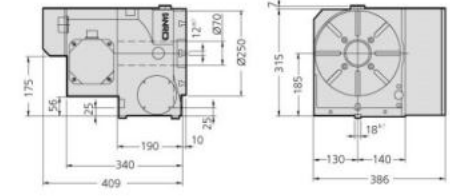
### DR-2500



### DR-170B



### DR-250B



★ The size of motor metal sheet will change in accordance with real use of brand and model.