

Since 1963

YUNIL MACHINE
<http://www.gearhob.co.kr>



ISO 9001 ISO 14001



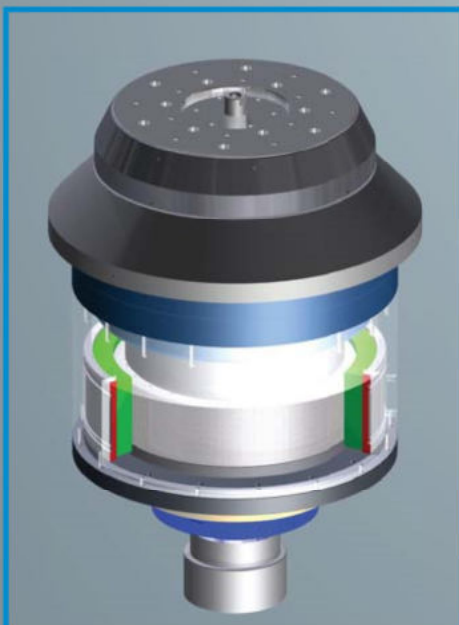
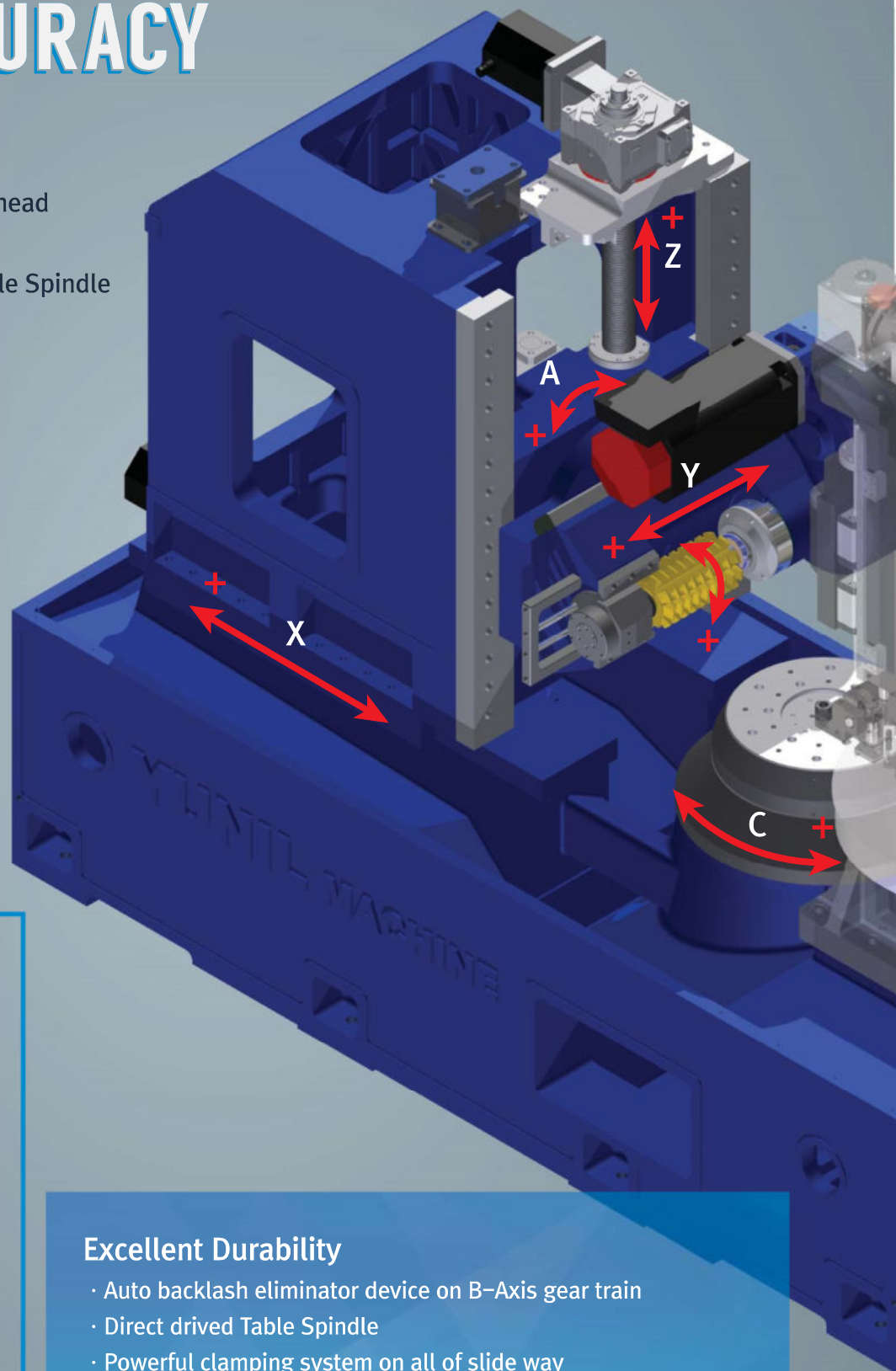
Only Gear Hobbing Machine Since 1963

HERA-500 / HERA-750 / HERA-1000
CNC GEAR HOBGING MACHINE

HERA-500 / HERA-750 / HERA-1000

HIGH PERFORMANCE CAPABILITY & HIGH ACCURACY

- A : Helix angle of hobbing head
- B : Hob Spindle Rotating
- C : Workpiece Rotating Table Spindle
- X : Hobbing slide axis
- Y : Tangential shift axis
- Z : Axial stroke axis
- U : Tailstock center axis
- W : Auto loading rotation

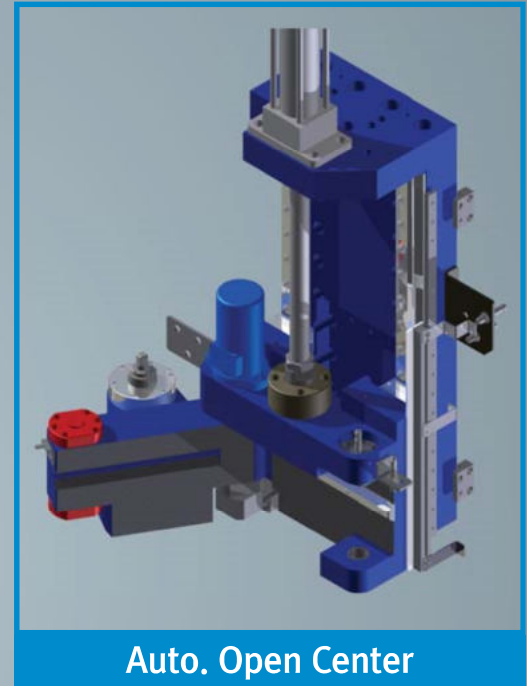
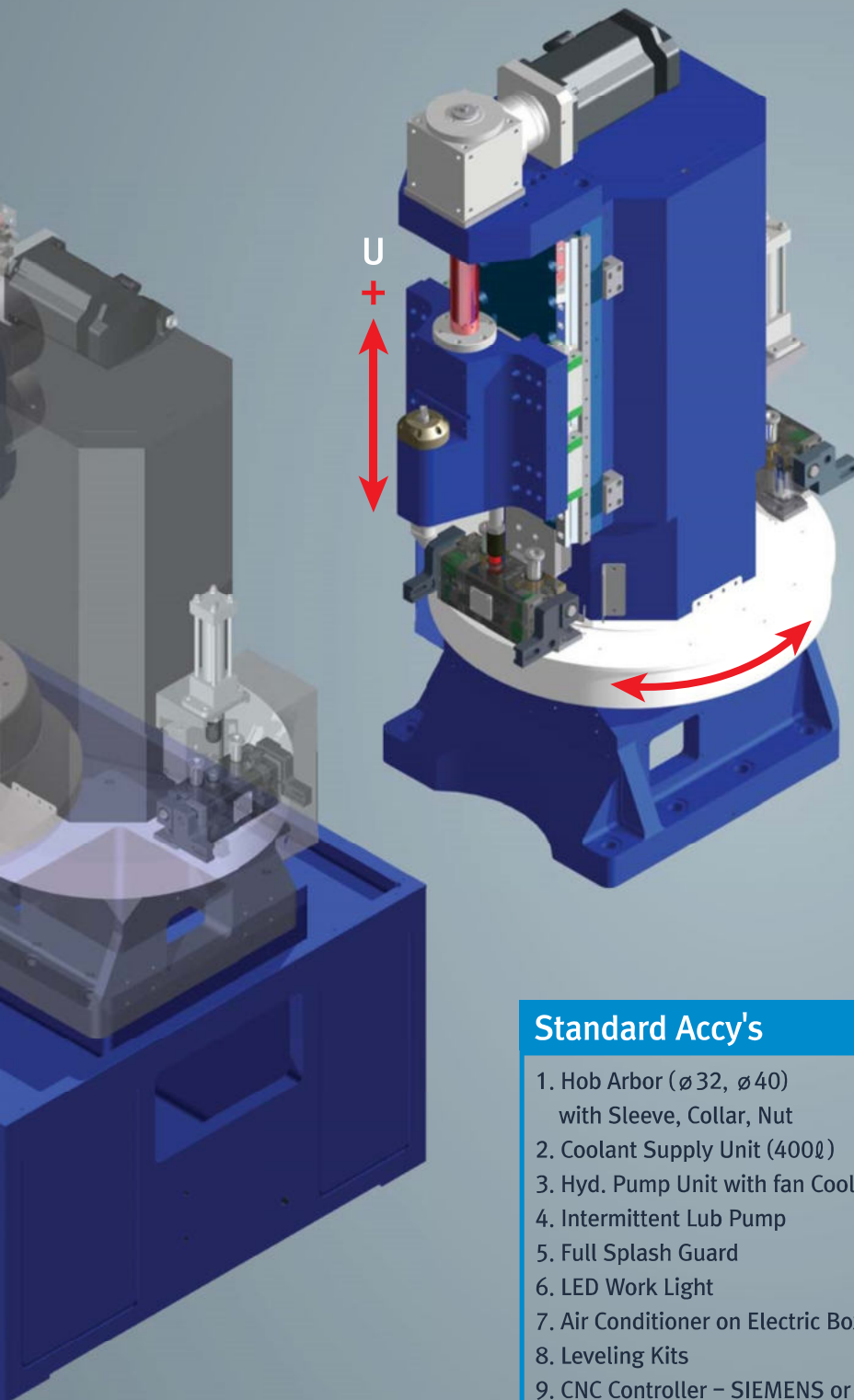


High Torque on C-Axis

Excellent Durability

- Auto backlash eliminator device on B-Axis gear train
- Direct driven Table Spindle
- Powerful clamping system on all of slide way
- Various kinds of self check instruments on Lubrication Hydraulic & Air System

HERA-500/HERA-750/HERA-1000 will Provide with High Efficiency for Your Production



Auto. Open Center

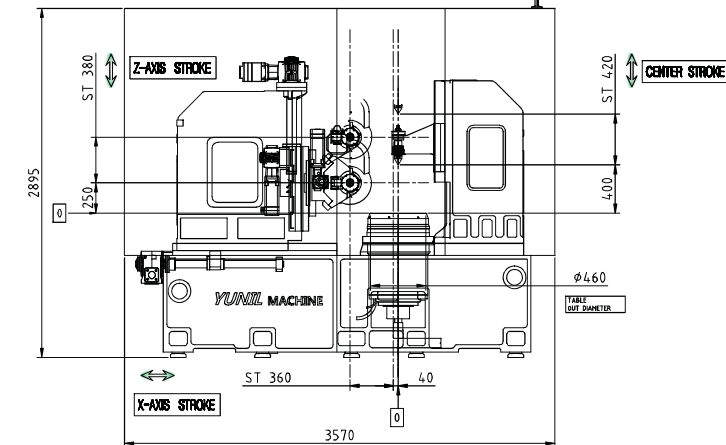
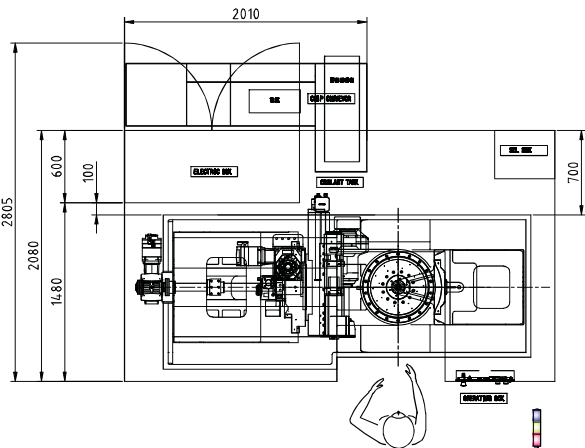
Standard Accy's

1. Hob Arbor ($\varnothing 32$, $\varnothing 40$) with Sleeve, Collar, Nut
2. Coolant Supply Unit (4000l)
3. Hyd. Pump Unit with fan Cooler
4. Intermittent Lub Pump
5. Full Splash Guard
6. LED Work Light
7. Air Conditioner on Electric Box
8. Leveling Kits
9. CNC Controller – SIEMENS or FANUC
10. Standard Tool & Box
11. Operating Manual (Operating/Maintenance)

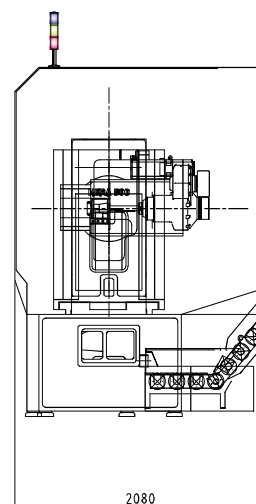
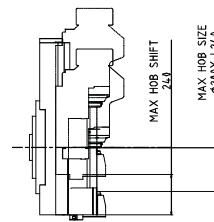
Optional Accy's

1. Auto-Draw Bar Attachment
2. Oil Mist Collector
3. Chip Separator (Magnetic)
4. Tool Presetter
5. Deburring Attachment
6. Auto-Door (Air)
7. Washing Line
8. 3 Layers Lamp
9. Jig & Fixture
10. Auto-Loading/UnLoading System
11. Conveyor & Stacker
12. 2 Years Service Contract
13. Skiving Unit
14. Various kinds of N.C Software

Machine Capacity	최대기계 사양	HERA 500	HERA 750	HERA 1000
Max. workpiece dia	최대 가공물	500mm	750mm	1,000mm
Max. pitch	최대 모듈	module 12.0	module 14.0	module 14.0
Radial Travel (X-axis)	전후 이송 거리	360 (40 ~ 400)	460 (40~500)	550 (50~600)
Max. helix angel (A-axis)	호브 회전 각도	+ 35° / -45°	+ 35° / -45°	+ 35° / -45°
Hob spindle RPM (B-axis)	B-축 회전수	20 ~ 500 rpm	20 ~ 350 rpm	20 ~ 350 rpm
Table max. RPM (C-axis)	C-축 회전수	110 rpm	110 rpm	75 rpm
Working range	작업 범위			
Z-axis work range	상하 이송 범위	380mm (250~630)	480mm (250~730)	500mm (280~780)
Center stroke range	센터 이송 범위	420mm (400~820)	500mm (400~900)	500mm (400~900)
Table diameter	테이블 직경	Ø450mm	Ø650mm	Ø850mm
Hob	공구			
Taper of spindle nose	주축 테이퍼	NT #50	NT #60	NT #60
Max. hob size(Dia x L)	호브 규격	Ø220 x 260	Ø220 x 280	Ø220 x 280
Max. hob shift(Y-axis)	Y-축 이송량	240	260	260
Rapid / feed speed	이동속도			
Axial rapid (Z-axis)	상하 급이송 속도	5,000 mm/min	5,000 mm/min	5,000 mm/min
Radial rapid (X-axis)	전후 급이송 속도	50,000 mm/min	50,000 mm/min	50,000 mm/min
Hob shift travel (Y-axis)	공구 급이송 속도	2,000 mm/min	2,000 mm/min	2,000 mm/min
Hob head swiveling	헬리칼 회전 속도	720° /min	720° /min	720° /min
Moter	모터			
Total power	총 소요 전력	90 KVA	90 KVA	120 KVA
Main spindle motor	주축 모터	134 Nm (28Kw)	134 Nm (28kW)	191 Nm (30kW)
Control system	컨트롤러	SIEMENSE or FANUC	SIEMENSE or FANUC	SIEMENSE or FANUC
Floor space (L x W x H)	소요 면적	3,570 x 2,800 x 2,900	3,750 x 2,800 x 3,000	3,950 x 2,800 x 3,400
Weight (Approx)	기계 중량	13.0 ton	15.5 ton	18.0 ton



Layout Dimension & Working Range



Stroke Range	HERA 500
X-Axis Stroke	360 (40 ~ 400)
X-Axis Stroke	240 (0 ~ 240)
X-Axis Stroke	380 (250 ~ 630)
Center Stroke	420 (400 ~ 820)

Stroke Range	HERA 750
X-Axis Stroke	460 (40 ~ 500)
X-Axis Stroke	260 (0 ~ 260)
X-Axis Stroke	480 (250 ~ 730)
Center Stroke	500 (400 ~ 900)

Stroke Range	HERA 1000
X-Axis Stroke	550 (50 ~ 600)
X-Axis Stroke	260 (0 ~ 260)
X-Axis Stroke	500 (280 ~ 780)
Center Stroke	500 (400 ~ 900)



YG

Yunil Gear Machine Tech. Co., LTD.

YG Tech.

#161-15, Seonno-ro, Seonnam-myeon, Seongju-gun,
Gyeongsangbuk-do, Republic of Korea
http://www.gearhob.co.kr
e-mail. yunil@gearhob.co.kr
Tel. +82-53-583-4031~4 Fax. +82-53-583-4035